

Pioneering for You

wilo

大樓、空調系統、市政供水及一般工業

WILO-BL/NL/NLG/NX 臥式端吸離心泵



Wilo-CronoBloc-BL

Field of application: Heating, air-conditioning, cooling, industrial process

Design: Glanded pump in monobloc design with flange connection

威樂BL直結式泵浦

應用領域：供暖·空調·冷卻·工業製程用途

設計：直結式泵浦設計配有法蘭接口



P1~P8

Wilo-CronoNorm-NL

Field of application: Heating, air-conditioning, cooling, industrial process

Design: Single-stage centrifugal pump with axial suction, according to EN 733 and ISO 5199, mounted on a baseplate

威樂NL端吸式聯軸泵

應用領域：供暖·空調·冷卻·工業製程用途

設計：單段離心泵，具水平吸入端及底座，符合EN 733和ISO 5199規範



P9~P17

Wilo-CronoNorm-NLG

Field of application: Heating, air-conditioning, cooling, industrial process

Design: Single-stage centrifugal pump with axial suction, according to ISO 5199, mounted on a baseplate

威樂NLG端吸式聯軸泵

應用領域：供暖·空調·冷卻·工業製程用途

設計：單段離心泵，具水平吸入端及底座，符合ISO 5199規範



P18~P24

Wilo-CronoNorm-NX (All Stainless Steel)

Field of application: Heating, air-conditioning, cooling, industrial process

Design: Single-stage centrifugal pump with axial suction, according to EN 733 and ISO 2858(on request), mounted on a baseplate

威樂NX端吸連軸泵 (全不銹鋼)

應用領域：供暖·空調·冷卻·工業製程用途

設計：單段離心泵，具水平吸入端及底座，符合EN 733(可選配ISO 2858)規範



P25~P32

Series description Wilo-NX 系列說明



Wilo-NX

Baseplate pump with axial suction, in accordance with EN 733 (ISO 2858 on request)

Application

- Suitable for clean water, sea water, light oils or process fluids, similar to water, slightly contaminated water or fluids without solid matter and not easy crystallization.
- Applications in sea water desalination, pure water treatment, general industry, etc.

Scope of delivery

- Pump with bare shaft end or
- Pump on baseplate with coupling and coupling protection, motor
- Completely mounted pump on baseplate with electric motor
- Housing: SS304 (Optional: SS316, SS316L or Duplex stainless steel)
- Installation and operating instructions

Type key

Example	NX 40/160-4/2
NX	Stainless steel end-suction pump
40	Nominal diameter in DN
160	Nominal impeller diameter
4	Nominal motor power P_2 in kW
2	Number of poles

Wilo-NX

不銹鋼臥式端吸離心泵，符合EN 733標準 (ISO 2858請與威樂公司聯絡)

應用

- 可用於輸送清水、海水、輕油類或生產製程流程中其他類似於水但具有一定腐蝕性或需要防止污染的無固體顆粒及不易結晶的液體介質。
- 應用於海水淡化、純水系統及一般工業等領域。

供應範圍

- 泵頭
- 泵頭、底座、聯軸器和聯軸器保護罩，含馬達
- 由泵頭、聯軸器、聯軸器保護罩馬達和底座組成的整泵
- 泵體：SS304 (可選：SS316、SS316L或雙相不銹鋼)
- 安裝及操作維護說明書

型號

例	NX 40/160-4/2
NX	不銹鋼臥式端吸離心泵
40	口徑(DN)
160	葉輪直徑
4	馬達額定功率 P_2 (kW)
2	馬達級數

Series description Wilo-NX 系列說明

Materials

- Pump housing
 - Stainless steel spiral with anti-rotation ribs.
 - With axially aligned suction piece and radial pressure ports and cast assembly feet.
 - Dimensions and hydraulics are in accordance with DIN EN 733
 - Flange PN 16 in accordance with DIN 2533
- Standard mechanical shaft seal AQ1EGG for water up to 120°C

材質

- 泵體
 - 不銹鋼螺旋泵殼
 - 軸向進水，徑向出水
 - 尺寸和性能符合 DIN EN 733 標準
 - 法蘭耐壓 PN16 符合 DIN 2533 標準
- 標準機械軸封 AQ1EGG 最高允許水溫 120°C

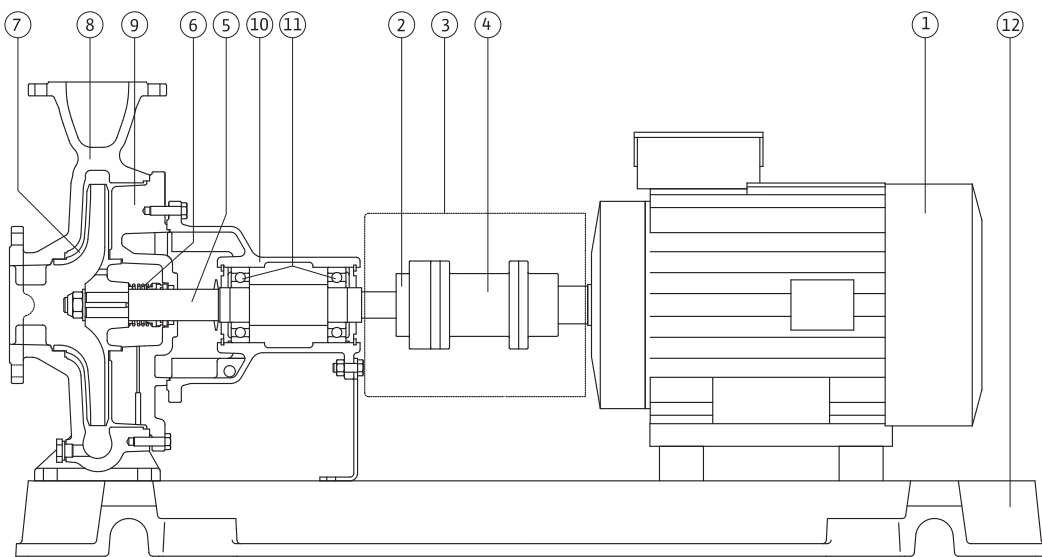
Description/design

- Single-stage centrifugal pump as baseplate pump with axial suction piece with flanged bearing bracket and axis mounting for flexibly coupled drives.
- Spacer coupling (sleeve coupling) available as an option; they make it possible to leave the motor in position when removing the rotor unit.
- Shaft deflection meets the requirements of ISO 5199.

設計說明

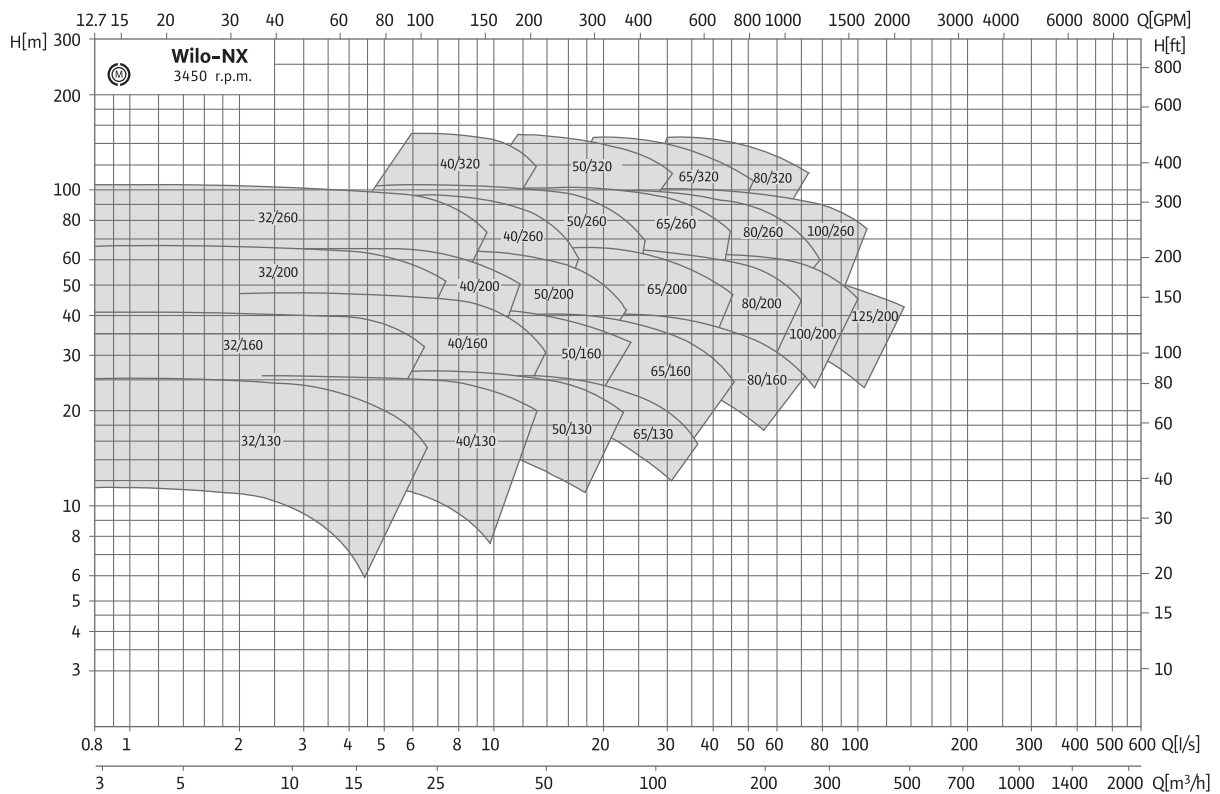
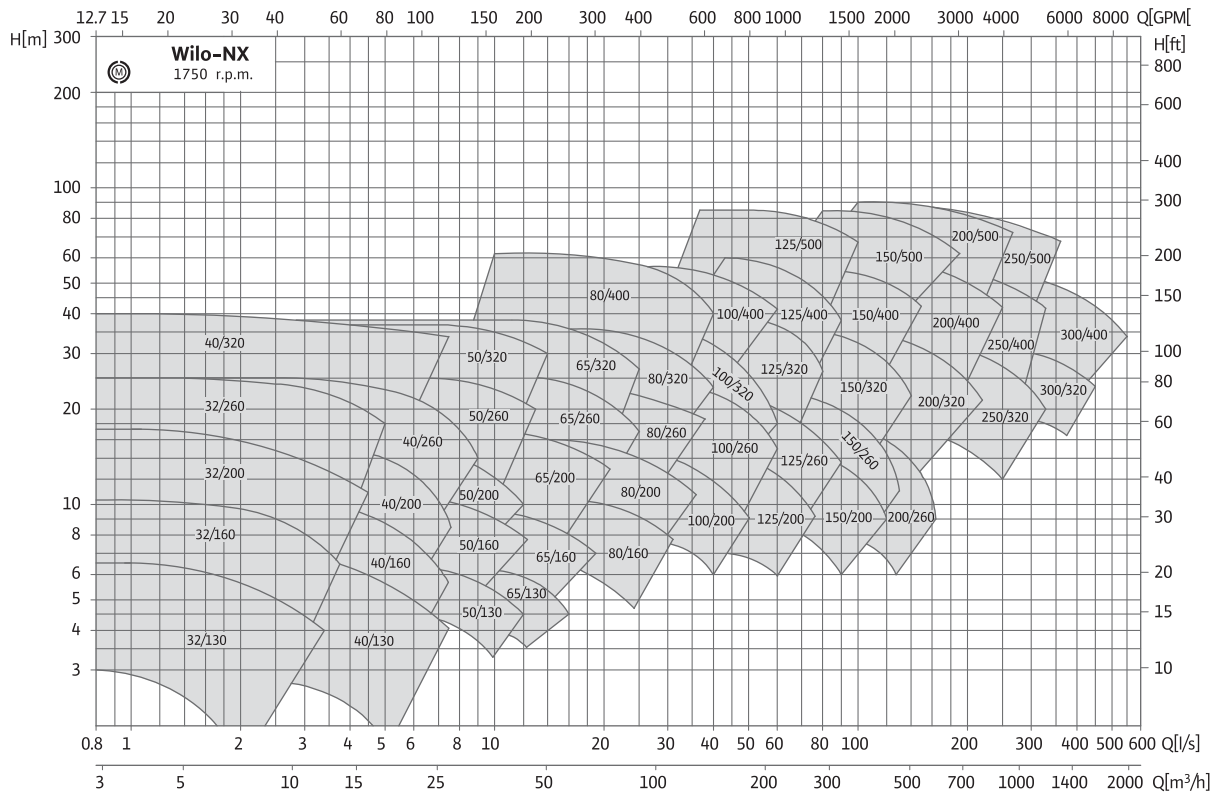
- 臥式單段不銹鋼端吸離心泵，帶軸承架和撓性聯軸器，裝於底座之上。
- 配有易拆型聯軸器，在移動馬達時留有足夠的拆卸空間，不需移動泵頭。
- 軸撓度滿足 ISO 5199 要求。

Section drawing 泵浦結構圖



1	Motor	馬達	7	Impeller	葉輪
2	Coupling	聯軸器	8	Pump housing	泵體
3	Coupling protection	聯軸器保護罩	9	Housing cover	後蓋
4	Spacer	易拆型聯軸器	10	Bearing bracket	軸承框
5	Shaft	軸心	11	Roller bearing	軸承
6	Mechanical seal	機械軸封	12	Baseplate	底座

Series description Wilo-NX 系列說明



Technical data Wilo-NX 技術資料

		Wilo-NX
Approved fluids (other fluids on request) 允許的輸送流體(其他流體請與威樂公司聯絡)		
Clean water	普通清水	•
Pure water	純水	•
Sea water	海水	•
Other slight corrosive liquids (without solid matter, not easy crystallization)	其他有一定腐蝕性液體 (無固體顆粒、不易結晶)	-
Permitted field of application 應用範圍		
Max. operating pressure at fluid temperature of +120°C [bar]	介質溫度120°C時最大工作壓力[bar]	16 bar
Temperature range [°C]	溫度範圍[°C]	-20 ~ +120°C (此溫度範圍之外請特別諮詢)
Max. ambient temperature [°C]	最高環境溫度[°C]	+40°C
Pipe connections 管線連接		
Nominal connection diameters DN on suction side: on pressure side:	連接管徑 DN 入口端 出口端	50-350 (larger nominal diameters on request) (其他口徑請與威樂公司聯絡) 32-300 (larger nominal diameters on request) (其他口徑請與威樂公司聯絡)
Flanges (according to EN 1092-2)	法蘭耐壓(符合EN1092-2)	PN16
Materials 材質		
Pump housing (standard)	泵體(標準)	• SS 304
Pump housing (special version)	泵體(特殊)	- SS316, SS316L, 雙相不銹鋼
Bearing brackets	軸承架	• EN-GJL-250 鑄鐵
Impeller (standard)	葉輪(標準)	• SS 304
Impeller (special version)	葉輪(特殊)	- SS316, SS316L, 雙相不銹鋼
Pump shaft (standard)	泵軸(標準)	• SS 431
Pump shaft (special version)	泵軸(特殊)	- 雙相不銹鋼
Mechanical seal	機械軸封	• AQ1EGG (carbon/silicon carbide/EPDM) 石墨/碳化矽
Other mechanical seals	其他機械軸封	- on request (depending on the pumped liquid) 其他(與威樂公司聯絡)
Electrical connection 馬達連接		
Speed range [rpm]	轉速[rpm]	• 1750/3450
Motor/electronics 馬達		
Factory standard IEC motor	IEC馬達	•
Protection class	保護等級	• IP55
Insulation class	絕緣等級	• F
PTC thermistor sensor	PTC熱敏電阻傳感器	- tripping unit required 配繼電器 (另須加價)

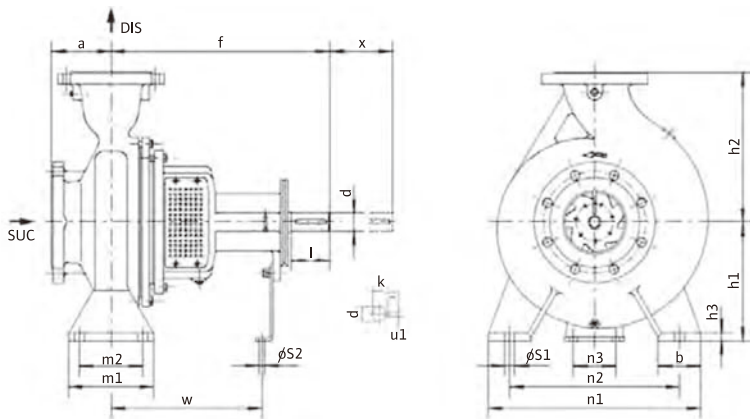
Technical data Wilo-NX 技術資料

		Wilo-NX
Energy efficiency class	效率等級	
Speed control	轉速控制	- Wilo control devices external frequency converter (additional charge) Wilo控制裝置,變頻器 (另需加價)
Motor winding up to 3kW	馬達線圈 ≤ 4 kW	• 220 V Δ /380 V Y, 60 Hz
Motor winding from 4kW	馬達線圈 ≥ 5.5 kW	• 380 V Δ /660 V Y, 60 Hz
Other voltages/frequencies	其他電壓/頻率	- Special version at additional charge 另需加價
Direct current	直流馬達	- Special version at additional charge 另需加價
Explosion-protected versions	防爆馬達	- Special version at additional charge 另需加價

• = available 標準配置

- = not available 可選用

Dimensions, Wilo-NX (bare shaft) 外型尺寸(泵頭)



Dimensions (bare shaft) 泵頭尺寸

NX...	Flange 法蘭		Pump dimensions 泵頭尺寸													Shaft dimensions 軸尺寸				
	SUC	DIS	a	f	h ₁	h ₂	b	m ₁	m ₂	n ₁	n ₂	n ₃	h ₃	s ₁	s ₂	w	d	l	k	a ₁
32/130	50	32	80	360	112	140	50	100	70	190	140	110	14	14	14	250	24	49	27	8
32/160	50	32	80	360	132	160	50	100	70	240	190	110	14	14	14	250	24	49	27	8
32/200	50	32	80	360	160	180	50	100	70	240	190	110	14	14	14	250	24	49	27	8
32/260	50	32	100	358	180	225	65	125	95	320	250	110	14	14	14	248	24	49	27	8
40/130	65	40	80	360	112	140	50	100	70	210	160	110	14	14	14	250	24	49	27	8
40/160	65	40	80	360	132	160	50	100	70	240	190	110	14	14	14	250	24	49	27	8
40/200	65	40	100	359	160	180	50	100	70	265	212	110	16	14	14	249	24	49	27	8
40/260	65	40	100	360	180	225	65	125	95	320	250	110	14	14	14	250	24	49	27	8
40/320	65	40	125	470	200	250	65	125	95	345	280	110	16	14	14	328	24	49	27	8
50/130	65	50	100	360	132	160	50	100	70	240	190	110	14	14	14	250	24	49	27	8
50/160	65	50	100	361	160	180	50	100	70	265	212	110	14	14	14	251	24	49	27	8
50/200	65	50	100	360	160	200	50	100	70	265	212	110	14	14	14	250	24	49	27	8
50/260	65	50	100	358	180	225	65	125	95	320	250	110	14	14	14	248	24	49	27	8
50/320	65	50	125	470	225	280	65	125	95	345	280	110	16	14	14	328	32	78	35	10
65/130	80	65	100	360	160	180	65	125	95	280	212	110	15	14	14	250	24	49	27	8
65/160	80	65	100	357	160	200	65	125	95	280	212	110	16	14	14	247	24	49	27	8
65/200	80	65	100	362	180	225	65	125	95	320	250	110	18	14	14	252	24	49	27	8
65/260	80	65	100	469	200	250	80	160	120	360	280	110	16	18	14	327	32	78	35	10
65/320	80	65	125	465	225	280	80	160	120	400	315	110	16	17.5	14	323	32	78	35	10
80/160	100	80	125	360	180	225	65	125	95	320	250	110	16	14	14	250	24	49	27	8
80/200	100	80	125	470	180	250	65	125	95	345	282	110	14	14	14	328	32	78	35	10
80/260	100	80	125	470	200	280	80	160	120	400	315	110	16	17.5	14	328	32	78	35	10
80/320	100	80	125	470	250	315	80	160	120	400	315	110	18	18	14	328	32	78	35	10
80/400	100	80	125	520	280	355	85	160	120	440	340	110	18	18	14	345	42	109	45	12
100/200	125	100	125	470	200	280	80	160	120	360	280	110	16	18	14	328	32	78	35	10
100/260	125	100	140	470	225	280	80	160	120	400	315	110	16	17.5	14	328	32	78	35	10
100/320	125	100	140	470	250	315	80	160	120	400	315	110	16	18	14	328	32	78	35	10
100/400	125	100	140	530	280	355	100	200	150	500	400	110	18	23	14	355	42	109	45	12
125/200	150	125	140	470	250	315	80	160	120	400	315	110	16	18	14	328	32	78	35	10
125/260	150	125	140	470	250	355	80	160	120	400	315	110	16	17.5	14	328	32	78	35	10

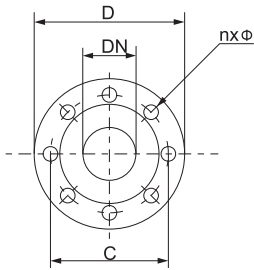
Dimensions, Wilo-NX (bare shaft) 外型尺寸(泵頭)

Dimensions (bare shaft) 泵頭尺寸

NX...	Flange 法蘭		Pump dimensions 泵頭尺寸														Shaft dimensions 軸尺寸			
	SUC	DIS	a	f	h ₁	h ₂	b	m ₁	m ₂	n ₁	n ₂	n ₃	h ₃	s ₁	s ₂	w	d	l	k	a ₁
125/320	150	125	140	530	280	355	100	200	150	500	400	110	18	23	14	355	42	109	45	12
125/400	150	125	140	530	315	400	100	200	150	500	400	110	18	23	14	355	42	109	45	12
125/500	150	125	180	670	375	500	100	200	150	550	450	140	24	24	14	495	55	110	59	16
150/200	200	150	160	495	280	400	100	200	150	550	450	110	20	23	14	353	32	78	35	10
150/260	200	150	160	528	250	355	100	200	150	450	350	110	18	23	14	353	42	109	45	12
150/320	200	150	160	530	280	400	100	200	150	550	450	110	18	23	14	355	42	109	45	12
150/400	200	150	160	530	315	450	100	200	150	550	450	110	18	23	14	355	42	109	45	12
150/500	200	150	180	670	375	500	100	200	150	550	450	140	24	24	14	495	55	110	59	16
200/260	250	200	180	546	280	400	100	200	150	550	450	110	25	26	14	371	42	109	45	12
200/320	250	200	200	670	355	450	100	200	150	550	450	110	20	23	14	495	48	110	52	14
200/400	250	200	200	670	355	500	100	200	150	550	450	110	20	23	14	495	48	110	52	14
200/500	250	200	210	675	400	500	160	300	240	720	600	140	30	27	14	500	55	110	75	20
250/320	300	250	200	670	355	525	100	250	175	600	500	110	24	24	14	495	48	110	52	14
250/400	300	250	250	670	400	500	120	300	250	710	600	140	25	24	14	495	55	110	59	16
250/500	300	250	240	875	425	545	160	300	240	720	600	140	30	27	19	625	70	140	75	20
300/320	350	300	260	875	400	560	140	300	200	750	600	140	30	27	19	625	70	140	75	20
300/400	350	300	280	875	500	600	150	300	200	800	660	140	40	27	23	625	70	140	75	20

Flange dimensions Wilo-NX 法蘭尺寸

Dimension drawing: 法蘭尺寸圖



Flange dimensions 法蘭尺寸

Nominal diameter 公稱直徑 DN	Pump flange dimensions 泵浦法蘭尺寸			Flange 法蘭 PN
	ϕ D 大小 [mm]	ϕ C	n x ϕ 孔數x大小 [pcs. x mm]	
32	140	100	4x18	16
40	150	110	4x18	16
50	165	125	4x18	16
65	185	145	4x18	16
80	200	160	8x18	16
100	220	180	8x18	16
125	250	210	8x18	16
150	285	240	8x22	16
200	340	295	12x22	16
250	405	355	12x26	16
300	460	410	12x26	16
350	520	470	16x26	16



Worldwide the name Wilo is synonymous with the tradition of first class German engineering. Our pumps and pump systems for heating, refrigeration, air conditioning, water supply and sewage are used in commercial buildings, communal facilities, industry and, of course, in private homes. In close cooperation with our customers, we have over the decades further developed our know-how from pumps and beyond to system competence. This know-how is the basis for solutions geared towards meeting the special needs of our customers: that is what we call Pumpen Intelligenz.

威樂(WILO)在全世界是德國極致工藝的代名詞，代表德國首屈一指的技術精神。我們的泵浦適用於供暖、冷凍、冷氣系統、供水和污水系統。廣泛被採用於商業大樓、市政供水系統、工業系統以及私人住宅。我們不只和客戶緊密的合作且具有領先業界數十年的泵浦專業知識和系統規劃能力。我們的專業能滿足您獨特的泵浦需求。這就是威樂品牌精神 “Pumpen Intelligenz.”，為客戶提供快速、卓越的產品和服務。